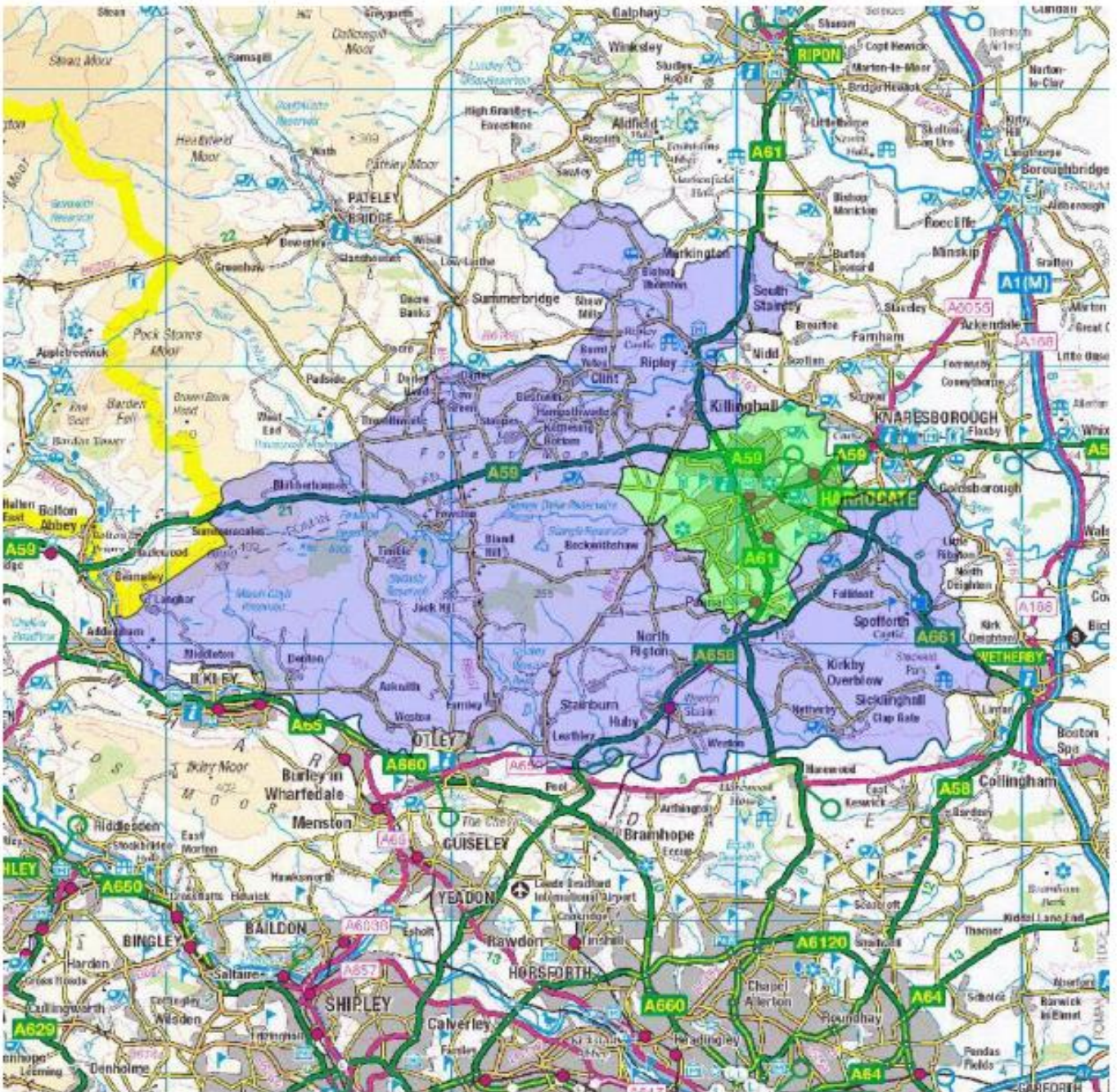


Rossett School catchment area map: Town and rural areas



The Rural Zone boundary runs west along the River Wharfe (North Yorkshire county boundary) from just west of Collingham to Addingham then north east passing through Blubberhouse, Darley and Shaw Mills to Bishop Thornton. It heads back towards Harrogate to include Ripley and Killinghall before crossing between Harrogate and Knaresborough to head south to Spofforth – where it began, west of Collingham again.

The Town Zone is within the Rural Zone and is largely Harrogate town centre and immediate 'suburbs'. In the south it includes Pannal and Burnbridge, the boundary heading north west includes the Army Apprentices College. The boundary then heads north east and skirts Jennyfields and Bilton, including both, to follow the River Nidd before heading due south to Forest Lane Head and then south west back to Pannal. All the major urban areas of the town are included.