

# CAREERS BULLETIN

**JANUARY 9TH 2026**

This week's Careers Bulletin is dedicated to our Year 11 students, who are not only working hard for their GCSE mock exams, but are also working on their plans for next year.

Some students have had a clear idea of what their next steps will be for a while, others have decided more recently, and some may still be undecided.



If your child is still unsure what they would like to do next or they have changed their mind, Rossett Careers Team is here to help. Please let us know if your child needs support at

[wainwrighte@rs.rklt.co.uk](mailto:wainwrighte@rs.rklt.co.uk)

Watch [this short video](#) to refresh your memory on what the options are once your child finishes Year 11.



## LOCAL SIXTH FORM OPTIONS



The Sixth Form  
at Harrogate Grammar School  
Excellence For All

There is a wide range of subjects to choose from, that can be combined in a number of ways to provide an individual programme of study. Students at Harrogate Grammar School study the equivalent of 3 ½ A Level or Level 3 Alternative Academic Qualifications.

### General Entry Requirements:

6 GCSEs at grade 4 or above including Maths and English. Several individual A-Level subjects have specific additional requirements.

Check full details in the Sixth Form course guide [here](#)

**Application Deadline: Friday 23<sup>rd</sup> January 2026. [Apply here](#)**

ST AIDAN'S & ST JOHN FISHER  
ASSOCIATED  
SIXTH FORM  
HARROGATE

To find out more about the Associated Sixth Form, you can attend Information Events at both schools on **Thursday 29th January 2026**. Please book on to the event at the school you wish to be based at. To book your place or for further details visit the school websites at [staidans.co.uk](http://staidans.co.uk) and [sjfchs.org.uk](http://sjfchs.org.uk)

**View the full course guide [here](#)**

### Overall requirements for sixth form entry

A Level Pathway	A minimum of 5 GCSE subjects at grade 5 (in some instances an average point score may be considered)
Applied Pathway	A minimum of 5 GCSE subjects at grade 4
Resit GCSE courses	Depending on the overall profile of a student it may be possible to resit GCSE English Language and Mathematics as students who do not achieve grade 4 in GCSE English and Mathematics must include re-sit GCSE or equivalent courses as part of their programme

**The deadline for applications to join the Associated Sixth Form is 13th February 2026. Apply [here](#) for St Aidan's and [here](#) for St John Fisher**

## LOCAL SIXTH FORM OPTIONS



King James's  
Sixth Form

Alongside academic A-levels, King James's Sixth Form also offers several level 3 courses including BTEC and applied vocational courses. These courses often involve a larger element of practical work and assessment with smaller weighting of examined assessment. You can find the full course guide and entry requirements [here](#)

### SIXTH FORM OPEN EVENING:

**Thursday 15th January 2026**

**6:30pm – 8:00pm.** If you have any further questions, please email

[sixthform@king-james.co.uk](mailto:sixthform@king-james.co.uk)

### SIXTH FORM APPLICATION

**DEADLINE:** 12 noon on Friday 13<sup>th</sup> February. Apply [here](#)



RIPON GRAMMAR SCHOOL  
Helping shape the future since 1555

Each year Ripon Grammar School typically admits 50+ students into the Sixth Form from other schools. Offers are made in March, on the basis of academic potential (school reports and predicted GCSE grades).

### SIXTH FORM OPEN AFTERNOON:

**28 January 2026, 2pm - 3:30pm.**

To book a place please complete the [registration form](#)

**ONLINE OPEN DAY:** Please click [here](#) to visit.

Further information about the A-Level courses offered is available in this [Course Guide](#).

### SIXTH FORM APPLICATION

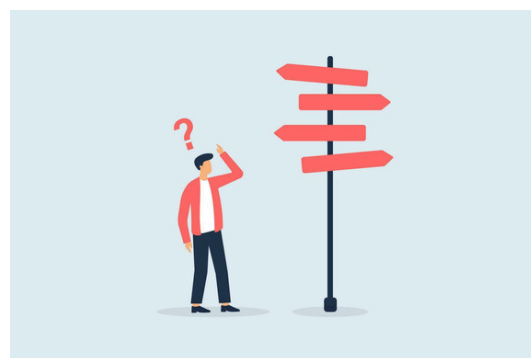
**DEADLINE:** Friday 6th February 2026

[Click Here](#) to apply

For any enquiries, contact [admissions@ripongrammar.com](mailto:admissions@ripongrammar.com)

## SIXTH FORM OPTIONS IN THE LEEDS LOCAL AUTHORITY AREA

- [Elliot Hudson College](#)
- [Leeds Mathematics School](#)
- [Leeds Sixth Form College](#)
- [Notre Dame Catholic Sixth Form College](#)
- [Pudsey Sixth Form College](#)



### Leeds Local Authority Schools with Sixth Forms

- [Abbey Grange Church of England Academy](#)
- [Allerton Grange School](#)
- [Allerton High School](#)
- [Benton Park School](#)
- [Boston Spa Academy](#)
- [Brigshaw High School](#)
- [Garforth Academy](#)
- [Guiseley School](#)
- [Horsforth School](#)
- [Lawnswood School](#)
- [Prince Henry's Grammar School](#)
- [Pudsey Grammar School](#)
- [Ralph Thoresby School](#)
- [Rodillian Academy](#)
- [Roundhay School](#)
- [St Mary's Menston Catholic Academy](#)
- [Temple Moor High School](#)
- [University Technical College Leeds](#) - strong focus on emerging digital technology, STEM, and engineering.
- [Woodkirk Academy](#)



## FE COLLEGES

**Further Education (FE) colleges offer courses at all levels. They offer a curriculum linked to careers that are predicted to grow in the future. Destinations include apprenticeships, jobs and university.**

Colleges offer vocational courses like Catering & Hospitality, Construction, Motor Vehicle and Automotive, and Health & Social Care.

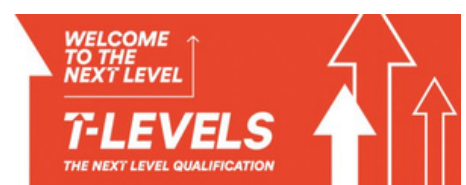


They also offer single subjects like Art & Design, Applied Science, and Business.

**\*Vocational and single subject courses are available from entry/foundation level (with no formal entry requirements), to Level 3 (equivalent to A-level), so there is ALWAYS a course available to get your child to where they want to be.**

**\*If your child needs a bit of extra time to build their confidence, there are personal development courses available that give students the chance to take a breath and explore their options.**

**T-Levels** - vocational qualifications, equivalent to 3 A Levels, that combine academic classroom study with a significant work placement of around 45 days.



## FE COLLEGE OPTIONS

### Applying to College

Your child can apply for a course online using the links to local college websites on the following pages. The application form will ask for your child's predicted (target grades). These can be found on your child's latest report.

**Please get in touch at [wainwrighte@rs.rklt.co.uk](mailto:wainwrighte@rs.rklt.co.uk) if you need a copy of your child's target grades.**



**[Askham Bryan College](#)** - primarily a Land-based and Agricultural College, but also offers courses in Motorsports, Public/Uniformed Services, Sport and Fitness. and Animal Care/Management.

**Explore courses [here](#)**

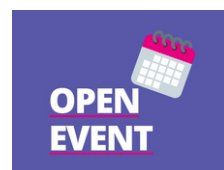


**[Leeds City College](#)**

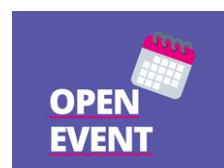
**Explore courses [here](#)**

**Explore T-levels [here](#)**

Book your place on the next open event on **Saturday 24<sup>th</sup>**  
**January [here](#)**



Book your place on the next open morning,  
**Saturday 24<sup>th</sup> of January [here](#)**



## FE COLLEGE OPTIONS

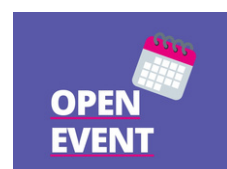


### Harrogate College

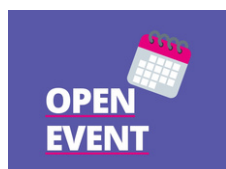
Explore courses [here](#)

Explore T-levels [here](#)

Book on to the next open event on the **12<sup>th</sup> of February** [here](#)



Alongside vocational and single subject courses, **York College** also offers over 40 A-Level qualifications. New for 2026, York College is also offering 'Mix' subjects, which are equivalent to one A-Level and allow students to combine two A-Levels and one vocational course. Click [here](#) to read more and apply.



Book on to the next open event on the **12<sup>th</sup> February** [here](#)

### **A-level Entry Requirements**

A minimum of four GCSE subjects at grade 5 or above, plus English Language and Maths at grade 4 or above. Individual A-Level subjects may have additional specific requirements. Check [here](#)

## FE COLLEGE OPTIONS

### Leeds College of Building

is the only Further Education College in the UK dedicated to the construction industry.

This means that some of their courses fill up very quickly so your child may end up on a waiting list. It is still worth applying, as a place may become available, but they will also need a back-up option that they are really happy with.

**Leeds College of Building encourages students to apply by the END OF JANUARY 2026 to avoid disappointment.**



Explore courses [here](#)

Explore T-levels [here](#)

Book on to the next open event

**Saturday 28<sup>th</sup> March 2026**

[here](#)



**OPEN  
EVENT**



Leeds Arts University is the only specialist arts university in the North of England. They also offer a two-year Extended Diploma (equivalent to 3 A-levels) in Creative Practice. Click [here](#) for details.

Book on to the next open event on **Wednesday 28<sup>th</sup> January** [here](#)



**OPEN  
EVENT**



## INDEPENDENT TRAINING PROVIDERS IN THE LEEDS LOCAL AUTHORITY AREA

### Study Programmes

- [Forging Futures](#) (construction)
- [Juniper Training](#) (personal development, customer service, work skills, traineeships)
- [Learning Curve Group](#) (military preparation / hair and beauty)
- [Lighthouse Futures Trust](#) (pre-internships for students aged 16-24 with an Education, Health and Care Plan - EHCP)
- [NACRO](#) (motor vehicle, construction multi skills, work ready)
- [SCL College](#) (health and social care, business, retail)
- [Street League](#) (sport, employability, English and maths)
- [YMCA](#) (sports, fitness and coaching, childcare, health and social care, employability)

### Short Engagement Programmes

- [King's Trust](#) (team programme and get into...)
- [SPEAR](#) (skills and employability)

# APPRENTICESHIPS



## Apprenticeships

An apprenticeship is a full-time paid job, which includes studying for a qualification. It is not possible to do a **full-time** college course **and** an apprenticeship, but if your child is hoping to secure an apprenticeship, it is advisable to apply for **both**.

Applying for both will help ensure that your child has a really positive next step, even if they are not able to secure an apprenticeship straight away. It also gives them the chance to:

- **Test out** whether they would enjoy an apprenticeship in their area of interest;
- **Build** their knowledge, skills, and maturity before starting a full-time job.

## Finding an Apprenticeship

- **Explore** live apprenticeship vacancies [here](#)
- **Browse** the types of apprenticeships available across a range of sectors [here](#)

## Where else to look



- Careers sections of company websites that particularly appeal to your child, and follow them on social media for updates
- Regularly check job boards like [Indeed](#)
- Tell everyone you know that your child is looking for an apprenticeship. You never know who might have useful connections!
- Sign up to college apprenticeship team newsletters to hear about new vacancies (via their website).

## TOP TIPS



### Apply for a Parallel Option

**If your child is worried that:**

- They might not meet the entry requirements for their preferred option;
- They have made a decision without exploring all the possible options;
- They are following their friends rather than their own aspirations

then applying for a parallel option is a good idea. This might be a Sixth Form with lower entry requirements, a course of interest at a college or with a training provider, or an apprenticeship. We encourage students to apply and accept offers for at least 2 options.

**Make Use of Rossett Careers Team** - Even once your child goes on study leave, we are here to support them **and** you.

We can help with:

- College, Sixth Form, and Apprenticeship applications;
- Creating CVs and cover letters;
- Exploring alternatives if your child has changed their mind;
- Finding volunteering or part-time job opportunities for the summer;
- Answering questions and addressing worries.

If you have any questions or need further support, please email Emmi Wainwright at [wainwrighte@rs.rklt.co.uk](mailto:wainwrighte@rs.rklt.co.uk)