

Year 12 Biology transition assignment

Create an illustrated fact sheet/poster on enzymes (minimum font size 10). This must be completed to an A-Level standard, i.e. extra information to be included above and beyond GCSE content.

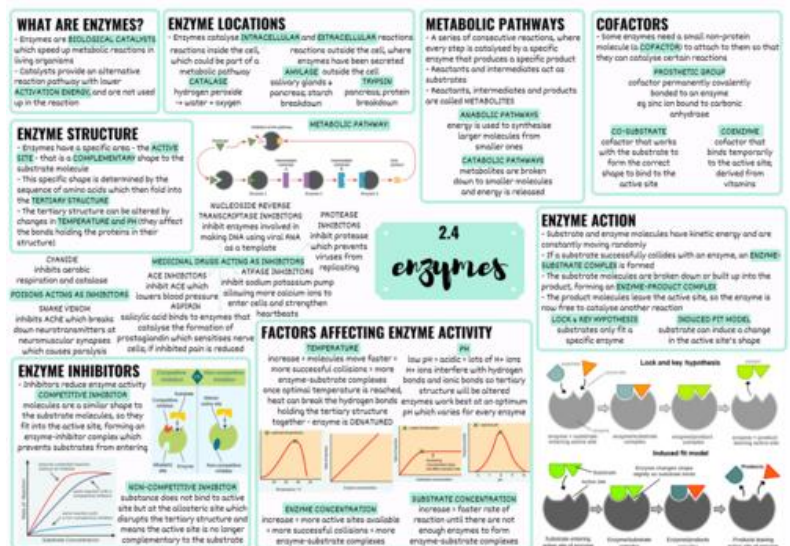
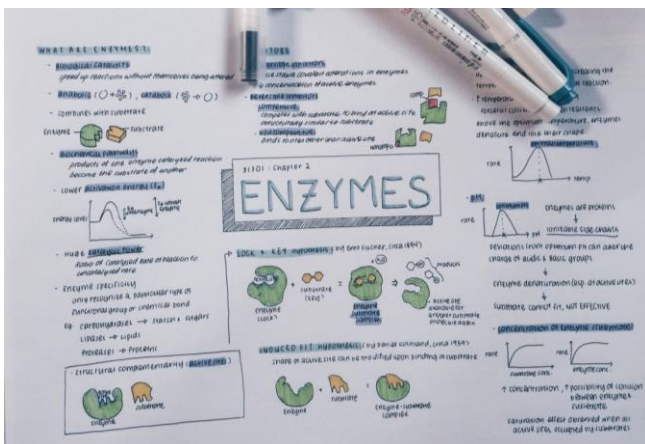
You must include information on:

- Protein structure.
- Enzymes structure and function including:
 - How their properties relate to their tertiary structure.
 - Its ability to combine with complementary substrate to form a complex- the **induced-fit model**.
- Factors affecting rate of enzyme-controlled reactions.
- Examples of reactions which enzymes catalase in animals and plants.
- Competitive and non-competitive inhibition.
- Diagram(s).
- Sources of information- a reference list.

Helpful resources:

- <http://www.spolem.co.uk>
- <http://www.biologymad.com>
- www.kscience.co.uk/resources/ks5/as/enzymes/enzymes.doc
- <http://kingsfieldbiology.wikispaces.com/file/detail/Enzymes+KS5.ppt>
- <http://www.biology-innovation.co.uk/>

Some good examples



Year 12 Biology transition assignment

Create an illustrated fact sheet/poster on enzymes (minimum font size 10). This must be completed to an A-Level standard, i.e. extra information to be included above and beyond GCSE content.

You must include information on:

- Protein structure.
- Enzymes structure and function including:
 - How their properties relate to their tertiary structure.
 - Its ability to combine with complementary substrate to form a complex- the **induced-fit model**.
- Factors affecting rate of enzyme-controlled reactions.
- Examples of reactions which enzymes catalase in animals and plants.
- Competitive and non-competitive inhibition.
- Diagram(s).
- Sources of information- a reference list.

Helpful resources:

- <http://www.spolem.co.uk>
- <http://www.biologymad.com>
- www.kscience.co.uk/resources/ks5/as/enzymes/enzymes.doc
- <http://kingsfieldbiology.wikispaces.com/file/detail/Enzymes+KS5.ppt>
- <http://www.biology-innovation.co.uk/>

Some good examples

