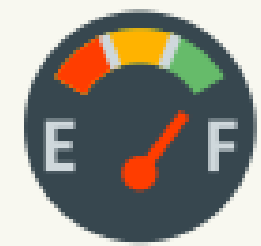


POST-16 OPTIONS



**full-time
education**



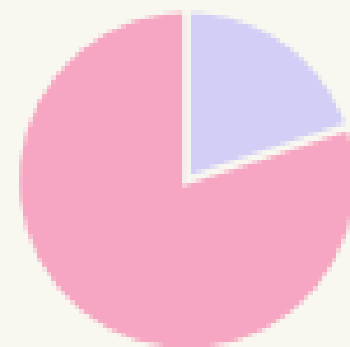
Stay here
(if post-16 available)



**Another 6th form,
college**
(mainstream,
specialist), school,
or training provider



**Learn
remotely
and/or at
home**



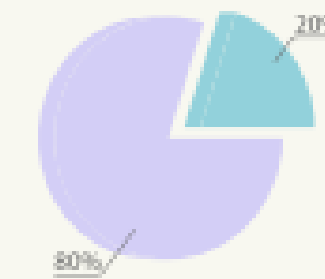
**work and learn
(all in one)**



Apprenticeship



Supported Internship



**work and learn
(separate)**



Start a business
(20+ hours a week)
and study or train
part time



**Work (20+ hours
a week)**
and study or train
part time



Volunteer
(20+ hours a week)
and study or train
part time

POST-16 OPTIONS: What Can I Study?

123

Entry Level 1, 2, 3



e.g. GCSEs at grades 3, 2, 1



e.g. GCSEs grades 4, 5, 6, 7, 8, 9



e.g. T-Levels, A-Levels, BTECs



A regulated qualification

GOOD TO KNOW

- Until you are 18 you have to do some form of education or training leading to a regulated qualification: <https://www.gov.uk/find-a-regulated-qualification>
- This could be at a School Sixth Form, a Sixth Form College, a Further Education College, a University Technical College, with a training provider, or a specialist college or training provider.
- What you can study and where depends on:
 - **Entry requirements**
 - **What you want/what is the right option for you**
 - **What is available to you**

FIND OUT MORE

<https://www.ucas.com/further-education/post-16-qualifications/qualifications-you-can-take>

<https://nationalcareers.service.gov.uk/careers-advice/career-choices-at-16>

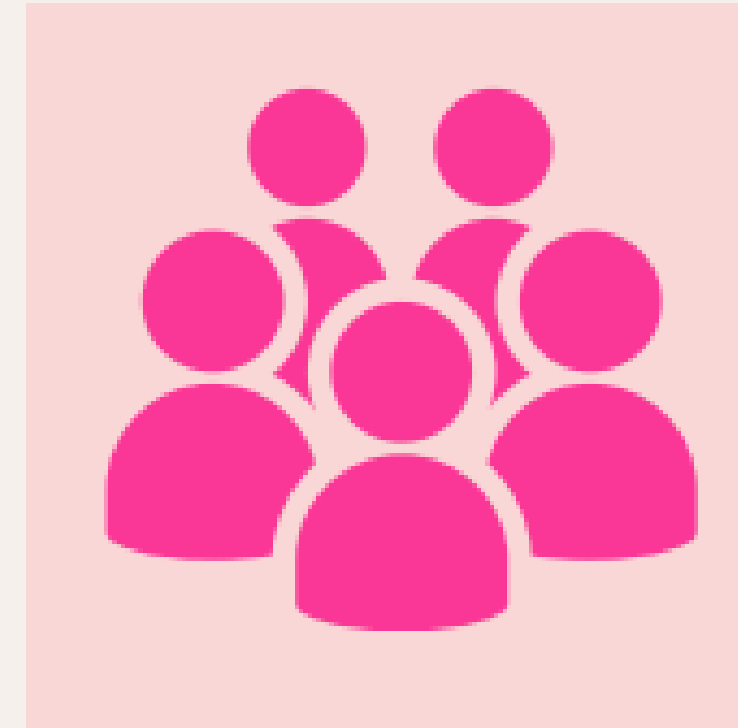
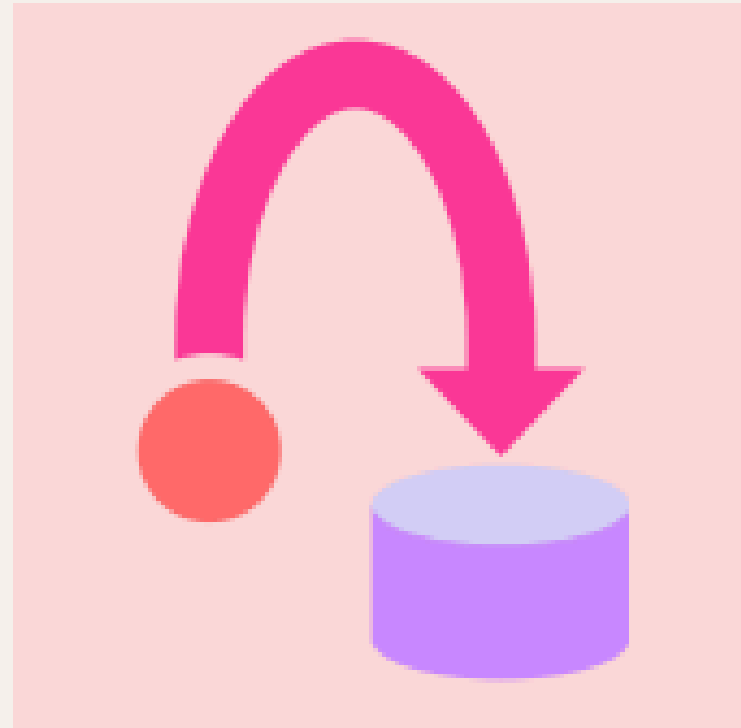
<https://www.gov.uk/courses-qualifications>

<https://natspec.org.uk/> - specialist provision for students with learning difficulties and disabilities

<https://www.northyorks.gov.uk/children-and-families/send-local-offer>

POST-16 OPTIONS: Study Programmes

June						
Su	Mo	Tu	We	Th	Fr	Sa
						1
2	3	4	5	6	7	8
9	10	11	12	13	14	15
16	17	18	19	20	21	22
23	24	25	26	27	28	29
30						



May last 6 weeks to
a year

Can do more than
1 in a year

Gain Maths, English,
employability skills

Small group of
5 to 10 students

Gain work
experience too

GOOD TO KNOW

FIND OUT MORE

- Develop Maths/English (GCSE or Functional Skills) and employability skills in an informal setting.
- Available for 16 to 18-year-olds or people up to 24-years-old (usually with an EHCP) or who are out of work or education.
- Can take more than 1 study programme in a year.
- Can lead to an apprenticeship, work, work-based training, and/or further education.

<https://sendiassnorthyorkshire.co.uk/youngpeople/choosing-a-school-or-college/>

POST-16 OPTIONS: Supported Internships



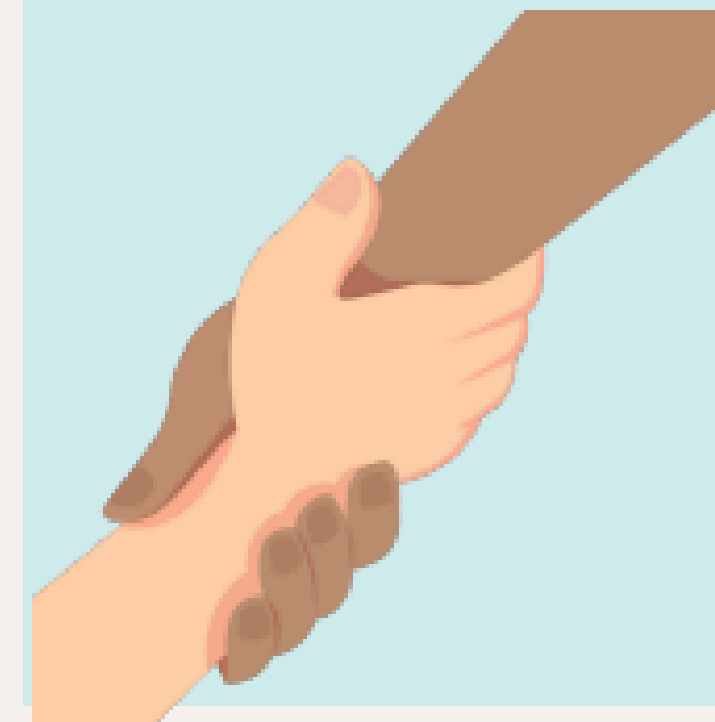
Last 6 to 12 months



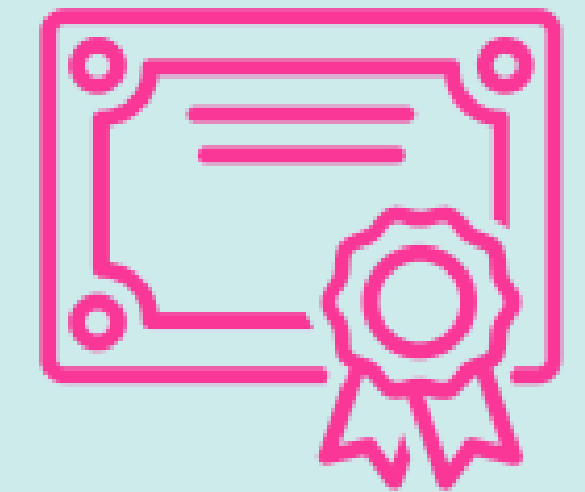
6+ months unpaid
work placement



Work-based study
programme



Get help from a
tutor or job coach



Study a relevant
qualification

GOOD TO KNOW

- A work-based study programme for people aged 16 to 24 with an EHCP.
- Helps people move from education into work.
- Study a relevant qualification at a level that's right for you including GCSE English or Maths.
- You may be able to get help from the Access to Work scheme:
<https://www.gov.uk/access-to-work>

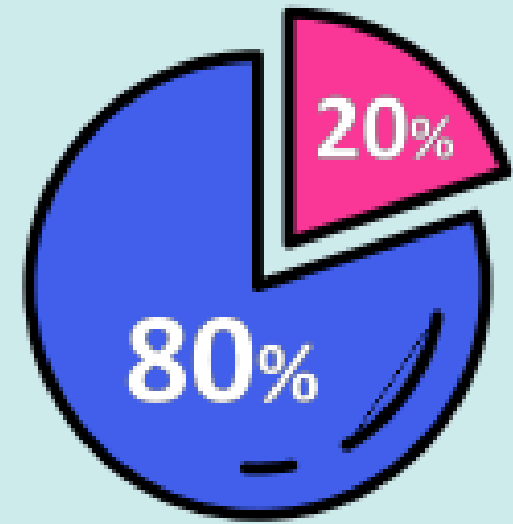
FIND OUT MORE

<https://www.skillsforcareers.education.gov.uk/pages/training-choice/supported-internship-with-an-ehc>

<https://www.ucas.com/further-education/supported-internships>

<https://www.northyorks.gov.uk/children-and-families/send-local-offer/send-information-young-people/flying-high-your-future-what-about-after-secondary/flying-high-your-future-supported-internship>

POST-16 OPTIONS: Apprenticeships



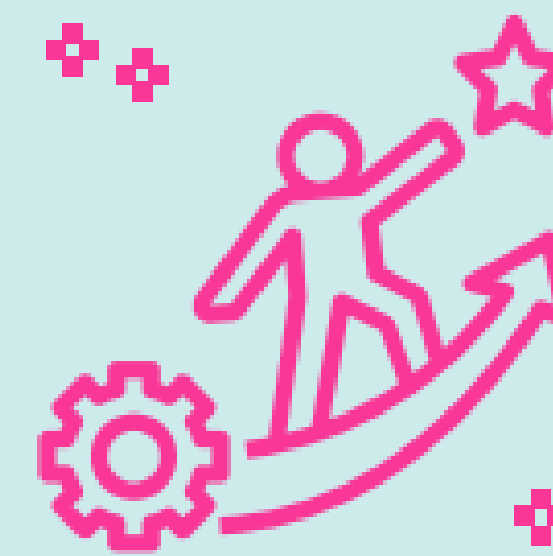
80% work, 20% study

100%

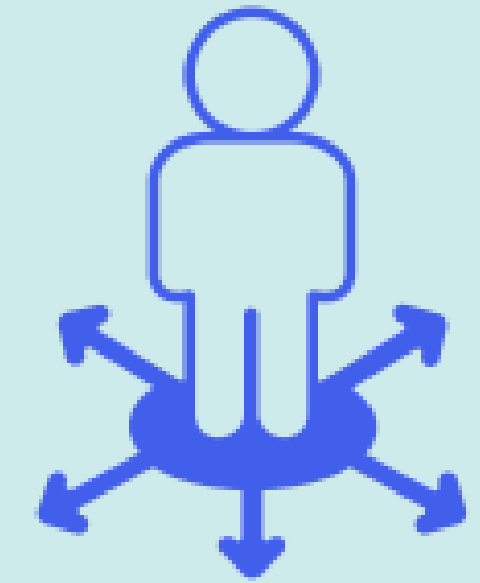
Paid 100% of the time



Gain a qualification



Gain experience



Many types of apprenticeships

GOOD TO KNOW

- Gain a Level 2 to 7 qualification or Functional Skills or GCSE (at employer's discretion) - requirements vary.
- Tick Disability Confident at <https://www.gov.uk/apply-apprenticeship> to find inclusive employers who will offer interviews to disabled candidates who meet the criteria.
- Accessible / inclusive apprenticeships are an option if you are 16+, with an EHCP, a minimum of Entry Level 3 English and Maths, and you are able to work 20+ hours a week.

FIND OUT MORE

<https://higherin.com/search-jobs/apprenticeships>

<https://www.amazingapprenticeships.com/apprenticeships/>

<https://www.disabilityrightsuk.org/guidance-resources>

<https://www.gov.uk/access-to-work>

<https://www.amazingapprenticeships.com/this-is-my-story/>

POST-16 OPTIONS: Start a Business



Bring your ideas
to life



Learn or train part-time



Juggling
responsibilities



Responsibility for
success / failure



Who can
support you

GOOD TO KNOW

FIND OUT MORE

- Start / run your own business for 20+ hours a week.
- Learn or train part-time (280+ guided learning hours (GLH) a year or 1 day a week being taught by a lecturer, tutor, or supervisor) - gaining a regulated qualification <https://www.gov.uk/find-a-regulatedqualification>.
- Potential Benefits: flexibility, satisfaction, reward, variety.
- Potential Risks: long hours, responsibility. variable pay, potential isolation, availability of finance, effort required, lack of employee benefits

<https://startups.co.uk/guides/>

<https://www.youthemployment.org.uk/careers-advice-help/choices/starting-your-own-business/>

[https://youvegotthis.uk/Yorkshire/\(self-employment internship programme for disabled people](https://youvegotthis.uk/Yorkshire/(self-employment%20internship%20programme%20for%20disabled%20people))

<https://www.gov.uk/access-to-work>

POST-16 OPTIONS: Employment & Study



Earn money /
get paid



Learn or train
part-time



Gain experience



Develop skills



Build confidence

GOOD TO KNOW

FIND OUT MORE

- Work for 20+ hours a week in an employed role.
- Learn or train part-time (280+ guided learning hours (GLH) a year or 1 day a week being taught by a lecturer, tutor, or supervisor) leading to a regulated qualification <https://www.gov.uk/find-a-regulated-qualification>.
- Tick Disability Confident at <https://www.findapprenticeship.service.gov.uk/apprenticeshipsearch> to find inclusive employers who will offer interviews to disabled candidates who meet the criteria.

<https://www.gov.uk/find-a-job>

<https://nationalcareers.service.gov.uk/careers-advice#getting-a-job>

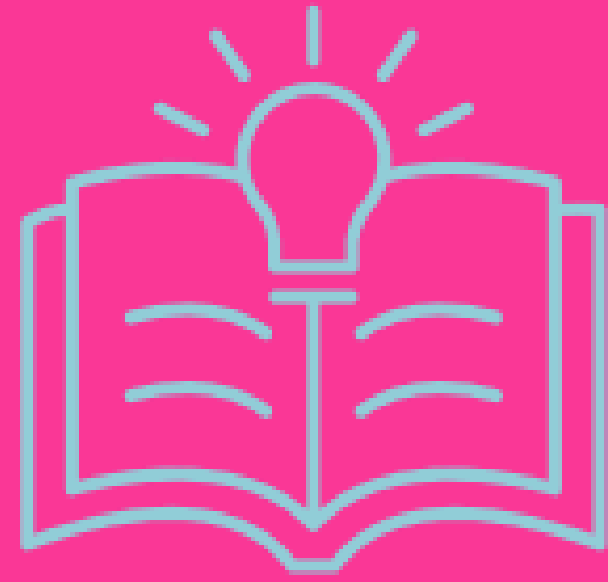
<https://www.base-uk.org/>

<https://www.evenbreak.com/uk/>

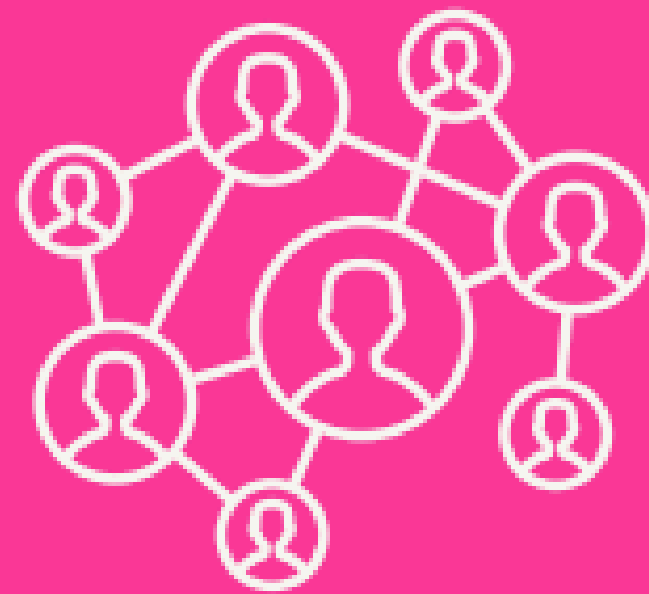
POST-16 OPTIONS: Volunteer & Study



Give your time
to others



Learn or train
part-time



Get to know people



Develop skills



Build confidence

GOOD TO KNOW

FIND OUT MORE

- Volunteer for 20+ hours a week - an opportunity to make a difference.
- Learn or train part-time - 280+ guided learning hours (GLH) a year or 1 day a week taught by a lecturer, tutor, or supervisor - leading to a regulated qualification <https://www.gov.uk/find-a-regulated-qualification>.
- Some voluntary roles involve the same tasks and responsibilities as an equivalent paid job.
- Even though not paid, applications can still be competitive.

<https://nationalcareers.service.gov.uk/careers-advice/advice-on-volunteering>

<https://volunteermatters.org.uk/volunteering/volunteer-with-us/>

<https://www.gov.uk/volunteering>

<https://hadca.org.uk/Volunteer/roles-young-people>