



Rossett School – Sixth Form  
COURSE DIRECTORY 2011–2012





ENRICHED  
ENERGISED  
ENCOURAGED  
ENJOYMENT  
ENGAGED

### Entry Requirements

Ideally at least 7 GCSE grade C or above.

GCSE grade B or above is normally required in the subject to be studied at A Level.

The following subjects may be studied without prior knowledge of the subject:

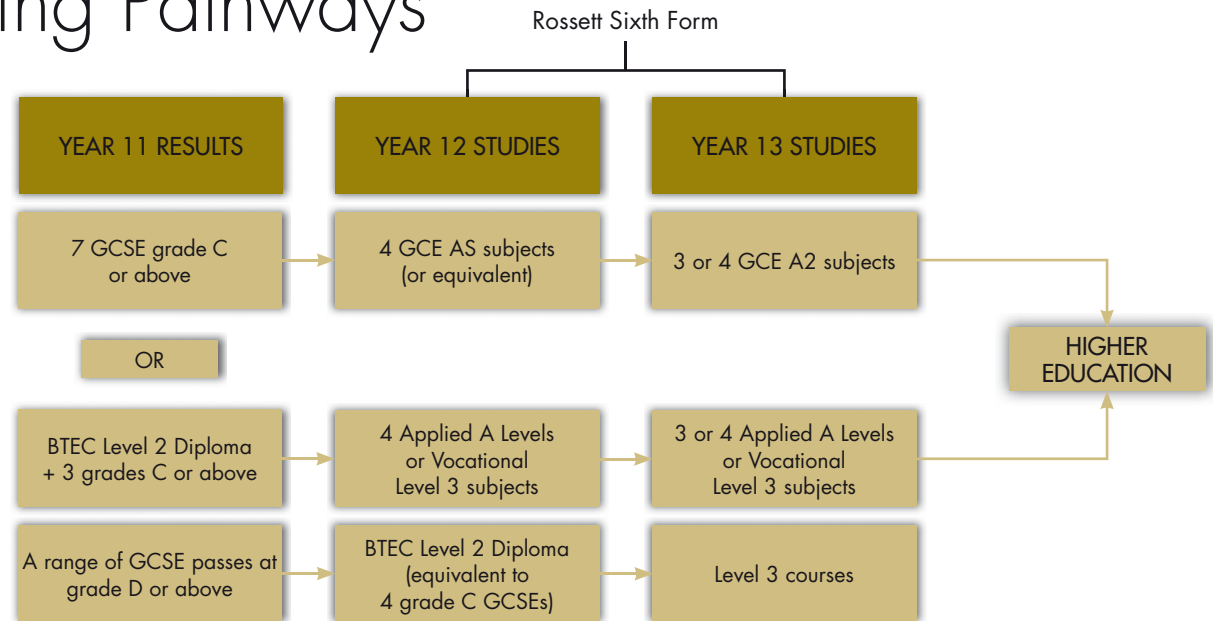
- Media Studies ■ Music ■ Sociology ■ Psychology
- Physical Education ■ Music Technology ■ Philosophy & Ethics ■ Theatre Studies

Certain A level subjects require a specific GCSE grade in another subject as part of the entry requirement.

### BTEC First Diploma (Level 2 qualification)

A range of GCSE passes at grade D or above.

## Learning Pathways



### BTEC First Diploma

If you are interested in joining us at Rossett School please complete the enclosed application form and return it to:  
The Director of Sixth Form Rossett School, Green Lane, Harrogate, HG2 9JP  
Tel: 01423 564444 Email: [office@rossettschool.co.uk](mailto:office@rossettschool.co.uk) Website: [www.rossettschool.co.uk](http://www.rossettschool.co.uk)



## Applied Business

### Course Structure

This is an exciting and innovative approach to studying; by looking at the practical applications of a variety of aspects of Business.

### AS Units

- Investigating people at work
- Investigating business
- Investigating marketing

### A2 Units

- Business development
- Investigating finance
- Marketing decisions

### Method of Assessment

Two thirds of the course is internally assessed coursework (externally moderated) and one third externally set and marked examinations.

*For further information please contact: Mr B Foley*

## Applied Health and Social Care

### Course Structure

This course has been designed to provide a broad educational basis for Higher Education or moving into the employment sector. It allows students the flexibility of studying the subject in depth for either a single A Level (six units) or two A Levels (twelve units)

### AS Units

- Human growth and development
- Communication and values
- Positive care environments
- Social aspects and lifestyle choices
- Activities for health and well-being
- Public health

### A2 Units

- Meeting individual needs
- Promoting health and well-being
- Investigating disease
- Using and understanding research
- Social issues and welfare needs
- Understanding human behaviour

### Method of Assessment

The course is assessed by a mixture of external examinations and the production of portfolios of evidence through coursework.

*For further information please contact: Mrs S Daly*





## Applied Science

### Additional Qualifications required

GCSE Core Science grade A\* to C and Additional or Additional Applied Science grade A\* to C. GCSE grade C in Maths is desirable.

### Course Structure

This A level is vocationally focused and offers students an opportunity to learn about the scientific environment through case studies and research. During the course you will develop your scientific skills, knowledge and understanding and learn to appreciate the social, economic and environmental impact that science has in society, identifying ethical issues that may arise.

### AS Units

- Science at work
- Analysis at work
- Monitoring the activity of the human body

### A2 Units

- Investigating the scientist's work
- Sampling, testing and processing
- Applications of biotechnology

### Method of Assessment

In both AS and A2 one unit is assessed by an external examination and the other two units are assessed by a portfolio of work. This will be completed throughout the year and will involve a variety of research tasks, practical work (including the analysis and evaluation of data), calculations based on the student's own and secondary data together with knowledge of health and safety issues in a variety of vocational settings.

*For further information please contact: Mr C Oldfield*

## Art, Craft & Design

*(Cannot be taken with Art and Photography)*

### Course Structure

Candidates should produce critical contextual work associated with two or more of the following:

- Fine art graphic communication
- Textile design
- Three-dimensional design
- Photography

### AS

This part of the course comprises one coursework portfolio unit and one externally set assignment which includes 5 hours of supervised time. Students will be given a set brief as a starting point and will develop their ideas and skills using a broad range of materials and techniques.

### A2

The A2 course builds on the skills and ideas developed throughout the AS course. Students will produce a 1000-3000 word assignment 'Personal Investigation' and the A2 externally set assignment includes 15 hours of supervised time.

### Method of Assessment

#### AS Level

- Unit 1 – 50% of AS grade – 25% A Level
- Unit 2 – 50% of AS grade – 25% A Level

#### A2 Level

- Unit 3 – 25% of A Level
- Unit 4 – 25% of A Level

*For further information please contact: Mrs H Davison*

## Art and Photography

*(Cannot be taken with Art, Craft & Design)*

### Course Structure

Students will produce critical contextual work associated with the following areas:

- Photography and fine art
- Photography and graphic communication
- Photography and textile design
- Photography and three-dimensional design

### AS

The course is comprised of one coursework portfolio unit and one externally set assignment which includes 5 hours of supervised time. Students will be given a set brief as a starting point and will develop their ideas and skills using a broad range of materials and techniques.

### A2

The A2 course builds on the skills and ideas developed throughout the AS course. Students will produce a 1000-3000 word assignment in Unit 3 'Personal Investigation' and the A2 externally set assignment includes 15 hours of supervised time.

### Method of Assessment

#### AS Level

- Unit 1 – 50% of AS grade – 25% A Level
- Unit 2 – 50% of AS grade – 25% A Level

#### A2 Level

- Unit 3 – 25% of A Level
- Unit 4 – 25% of A Level

*For further information please contact: Mrs H Davison*

## Biology

### Additional qualifications required

GCSE Grade B in Biology or GCSE Grade B in Core Science and Additional Science. GCSE grade B in Maths is desirable.

### Course Structure

This A level builds on concepts and skills that have been developed in GCSE Biology and presents the subject in an exciting, relevant and challenging way. The specification covers disease, genetics, the environment and control in cells and organisms.

### AS Units

- Biology and disease
- Living organisms
- Investigative and practical skills

### A2 Units

- Populations and environment
- Control in cells and organisms
- Investigative and practical skills

### Method of Assessment

Assessment will be through modular examinations and assessment of students' investigative and practical skills throughout each year.

*For further information please contact: Mr J Lee*

## BTEC Level 2 Diploma in Business

### Additional qualifications required

No prior Business knowledge is necessary.

### Course Structure

The course covers the main areas of business activity as well as giving students the opportunity to develop the knowledge, skills and understanding needed in the world of work.

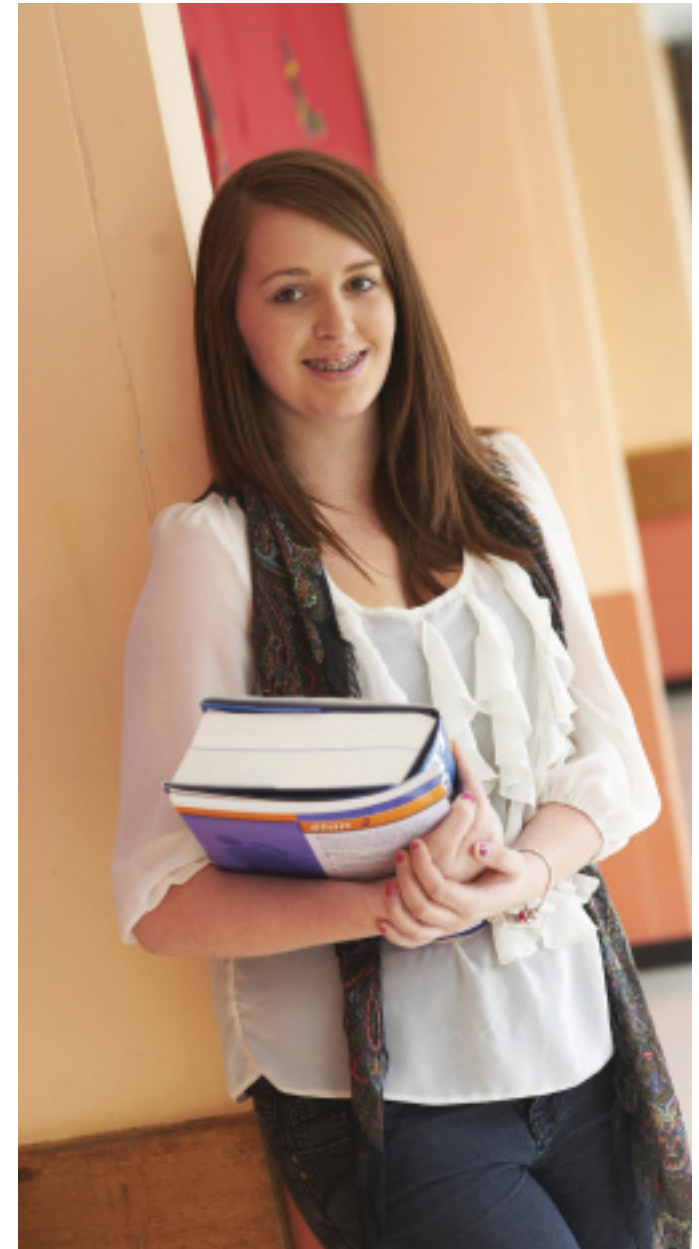
The units covered include:

- Business purposes
- Business organisations
- Financial forecasting for a business
- People in organisations
- Business online
- Starting a small business

### Method of Assessment

There is no external examination as all the work is collected in a portfolio demonstrating the study and understanding of units listed above. The portfolio is marked and moderated by tutors and externally moderated by the examination board.

*For further information please contact: Mr B Foley*





## BTEC Level 2 Diploma in Health & Social Care

### Additional qualifications required

No prior health and social care knowledge is required.

### Course Structure

The course covers the main areas of health and social care activity as well as giving students the opportunity to develop the knowledge, skills and understanding needed in the world of work.

The units covered include:

- Vocational experience in a health or social care setting
- Human lifespan development
- The impact of diet on health

### Method of Assessment

There is no external examination as all the work is collected in a portfolio demonstrating the study and understanding of units listed above. The portfolio is marked and moderated by tutors and externally moderated by the examination board.

*For further information please contact: Mrs S Daly*

## BTEC National Media Studies

### Course Structure

Students will study a wide range of aspects of visual media, with emphasis on developing and practicing production skills, working creatively and independently.

The course focuses on:

- Research and pre-production techniques for the film and television industries
- Camera techniques and editing

Developing the skills and knowledge associated with the topics above will enable students to build the essential requirements for working in film and television production or going on to study media in further or higher education.

### Method of Assessment

Assessment is by coursework portfolio entirely.

*For further information please contact: Mr S Dale*

## BTEC Sport

*(This course offers the flexibility to gain up to 3 A level equivalents)*

### Course Structure

The course provides an introduction to students who hope to pursue a career in sport. These areas include careers in exercise and fitness, coaching, sports development and outdoor education. The course has been structured to allow students some flexibility in selecting specialist areas of study, so that particular interests and career aspirations within sport can be developed.

Certificate = 30 Credits  
= AS

Subsidiary Diploma = 60 Credits  
= 1 A level equivalent

Diploma = 120 Credits  
= 2 A level equivalent

Extended Diploma = 180 Credits  
= 3 A level equivalent

### Method of Assessment

All units are internally assessed against specific grading criteria.

*For further information please contact: Mr M Fenton or Mrs J Bonsels*

## BTEC Performing Arts

*(This course can only be taken as a two year course and is equivalent to one A Level)*

### Additional qualifications required

BTEC Level 2 qualification in Performing Arts, a related vocational area or seven GCSEs at grade A\* to C.

### Course Structure

The course focuses on:

- Performing to an audience
- Musical theatre performance
- Singing techniques and performance
- Dance/Movement performance
- Acting performance
- Theatre in education

### Method of Assessment

Students take part in three performances each year which will be assessed as part of the final examination.

This is a practical subject with coursework elements. This course requires time and commitment as students will be expected to organise and attend additional rehearsals in preparation for the various performances in which they will be involved.

*For further information please contact: Mrs Z Binns*

## Business Studies

### Course Structure

Units at AS level provide students with the skills for successful small business operations. Units at A2 level develop students' knowledge and understanding of various strategies for larger business operations.

### AS Units

- Planning and financing a business
- Managing a business

### A2 Units

- Strategies for success
- The business environment and change

### Method of Assessment

The course is assessed by modular examinations in January and June of each year. At AS and A2 level the examinations are based on business decision-making case studies.

*For further information please contact: Mr B Foley*

## Chemistry

### Additional qualifications required

GCSE Grade B in Chemistry or GCSE Grade B in Core Science and Additional Science. GCSE grade B in Maths.

### Course Structure

The Chemistry course builds on the 21st Century Science courses studied at GCSE. It explores basic concepts of Chemistry as a basis for understanding how and why chemical reactions occur and how they can be controlled. The properties and reactions of different types of substances are studied to illustrate important principles. Students learn about modern chemical techniques and develop their practical experimental skills, their qualitative and quantitative problem-solving abilities and their powers of evaluation.

Throughout the course emphasis is placed on putting Chemistry in context. Activities are incorporated to illustrate how science works and to explore the uses and impact of Chemistry in the 'real world'.

### AS Units

- Atoms, bonds and groups
- Chains, energy and resources
- Practical skills in chemistry 1

### A2 Units

- Rings, polymers and analysis
- Equilibria, energetics and elements
- Practical skills in chemistry 2

### Method of Assessment

Assessment will be through modular examinations and assessment of students' investigative and practical skills throughout each year.

*For further information please contact: Dr S Strathdee*



## Design and Technology: Food Technology

### Course Structure

This course is designed to encourage candidates to:

- develop a broad view of food products within a design and technology context
- develop their capacity to design and make food products
- appreciate the complex relations between design, materials, manufacture and marketing

### AS

Students study nutrition and design and making food products. Knowledge of food science and the wide range of materials and components used in the making of food products is developed; learning through designing and making

### A2

Students build upon the knowledge and practical skills gained at AS level. Students continue to develop design work, alongside an understanding of food science, processes and commercial food manufacture

### Method of Assessment

One coursework module and one formal examination at both AS and A2

*For further information please contact: Ms M Parker*

## Design and Technology: Product Design

### Additional qualifications required

GCSE B or above in Product Design or Resistant Materials

### Course Structure

Students will develop their capacity to design and make products and to appreciate the complex relations between design, materials, manufacture, marketing and the environment. Students will gain an understanding of industrial and commercial practices within the area of design and manufacture.

### AS Units

- Materials, components and application (theory)
- Learning through design and making (coursework)

### A2 Units

- Design and manufacture (theory)
- Design and making practice (coursework)

### Method of Assessment

#### AS Level

- Materials, components and application - written paper
- Coursework: (approximately 50 hours) three practical projects. A design folder is produced taking elements from each project and is submitted for assessment.

#### A2 Level

- Design and manufacture - written paper
- Coursework: (approximately 50 hours) one practical project chosen by the student. This comprises an in depth study into a real design situation and brief in which the design and make process is used to solve problems.

*For further information please contact: Mrs A-M Phelps or Mrs V Cunningham.*

## Design and Technology: Textiles

### Course Structure

Students will develop their abilities to design and make a range of textile products whilst learning the basic characteristics of core fibres and materials to ensure a strong and comprehensive knowledge. Students will gain an understanding of industrial and commercial practices within the area of design and manufacture.

### AS Units

- Materials, components and application (theory)
- Learning through design and making (coursework)

### A2 Units

- Design and manufacture (theory)
- Design and making practice (coursework)

In both AS and A level students will gain an understanding of industrial and commercial practices within the area of design and manufacture.

### Method of Assessment

#### AS Level

- Materials, components and application – 2 hour written paper
- Coursework: (approximately 50 hours) a range of products will be completed throughout the year and are used to create a design portfolio which is externally assessed.

#### A2 Level

- Design and manufacture – 2 hour written paper
- Coursework: (approximately 50 hours) a single project chosen by the student. Here they are expected to thoroughly research, develop and create a final textile product using their knowledge and understanding of the design and making process to achieve an effective and coherent solution to their design brief.

*For further information please contact: Mr S Holmes or Mrs C Webster*

## Economics

### Course Structure

A Level Economics is designed to give students an insight into key issues affecting everyday life. This has never been more important than in the current economic climate. Students will be expected to develop both analytical and evaluation skills.

The subject is split into four main examined units

### AS Units

- *Markets and Market Failure* - Basic microeconomic models such as demand and supply, the operation of the price mechanism, and causes of market failure are key to this module
- *The National Economy* - Students will develop a good knowledge of developments in the UK economy and government policies over the past ten years

### A2 Units

- *Business Economics and the Distribution of Income* - Students will be required to use and evaluate more complex microeconomic models; for example, perfect competition, monopoly and oligopoly and to develop further their critical approach to such economic models and methods of enquiry.
- *The National and International Economy* - Students will examine the ways in which developments in the United Kingdom economy can be related to the global and European Union contexts.

### Method of Assessment

Written examinations each January and June.

*For further information please contact: Mr B Foley*

## English Language

### Additional qualifications required

English Literature grade B or above

### Course Structure

On this course students will study how language, both spoken and written, is used in a range of ways – to persuade, to inform and to entertain. There are also opportunities for students to produce pieces of creative writing for a coursework portfolio.

### AS Units

- Exploring and understanding spoken and written language in use
- The roles of purposes, audiences and contexts
- An analysis and investigation of a variety of extracts taken from everyday sources
- Development of personal writing
- Writing to entertain, to persuade, to inform and to instruct

### A2 Units

- The nature and functions of language acquisition and social development of children from 0-11 years
- Historical and contemporary changes in the English language from the 1700s to the present day
- Independent study of an aspect of the English language that students have chosen to investigate

### Method of Assessment

One coursework module and one formal examination at both AS and A2.

*For further information please contact: Mrs G Brown*

## English Literature

### Course Structure

The following topics may be studied at AS Literature; World War One literature, Victorian literature and the struggle for identity in modern literature. Students will study a wide range of texts including poetry, drama and prose.

### AS Units

- *Texts in context*: This unit assesses the poetry set text plus students' wider reading.
- *Creative study*: This is a coursework module and will involve two pieces of work - a personal informed response to the chosen prose text and a piece of writing on the chosen drama text, focusing on aspects such as theme, structure and characterisation.

The focus of the A2 course is 'Love through the Ages'.

### A2 Units

- *Reading for meaning*: Students will read a range of texts including the three genres of prose, poetry and drama from Chaucer to the present day.
- *Extended essay and Shakespeare study*: This is a coursework module where students will study three texts with a shared theme, one of which will be a Shakespeare text.

### Method of Assessment

Assessment is by formal examinations and coursework.

*For further information please contact: Mrs G Brown*



## French and/or Spanish

### Course Structure

The two year course extends the skills learnt at GCSE and enables students to deal with current topics developing a sophisticated level of language. The course is divided into four units of study.

### AS Units

- Media
- Popular culture
- Healthy living
- Family and relationships

### A2 Units

- Environment
- The multicultural society
- Contemporary social issues
- A cultural topic

### Method of assessment

Assessment focuses on listening, reading, writing and speaking skills and is based on written and oral examinations.

*For further information please contact: Mr P Bourgeois or Mrs B Bowman*

## Geography

### Course Structure

#### AS

Students will study physical and human geographical themes, rivers, cold climates, population and food supply issues. Students will also be expected to develop skills of data presentation and analysis and learn how to use and explain facts and processes in structured and essay questions. Several field courses cover practical components for the skills exam.

#### A2

Students will study contemporary geographical issues including: hazards, weather and climate and development issues. Exam papers will cover these issues together with a geographical issues evaluation of an unseen problem as a synoptic conclusion.

The course will include further development of essay techniques and skills of IT, numeracy and problem solving.

### Method of Assessment

Assessment is by two examinations at both AS and A2 involving both structured and essay style questions.

*For more information please contact: Miss R Jowett*

## History

### Course Structure

The course has two components: Tsarist and Revolutionary Russia (1855-1917) and Life in Hitler's Germany 1933-1945. Tsarist and Revolutionary Russia explores the theme of change and opposition through the reigns of the last three Tsars and 1917 the year of Revolutions. Life in Hitler's Germany explores how the Nazis governed Germany and how Hitler attempted to make his ideological vision a reality.

Aspects of the studies include:

- Propaganda and indoctrination
- Coordination of German society
- Impact of the war on German society

### Method of Assessment

Two written examinations.

*For further information please contact: Mrs R McFarlane*



## Information and Communication Technology

### Course Structure

#### AS

This course covers a range of applications and focuses on developing skills without the need for extensive documentation. Units include 'How we can solve practical problems' and 'The nature of living in the digital world and the effects it has on individuals, organisations and society'.

#### A2

This course builds on the work from AS and takes students further into the effects of the uses and impact of ICT in the digital world. A large part of the year will be devoted to coursework and students will undertake a practical activity and produce an ICT solution to a substantial problem. This will enable students to focus within one application and extend their practical skills.

### Method of Assessment

At AS candidates sit two written examinations. One unit will also require the candidate to include some elements of practical work covered during the course.

At A2 there is a written examination and a project that is undertaken during the year.

*For further information please contact: Mr J Clemitson*

## Mathematics (Further)

### Additional qualifications required

GCSE Mathematics grade A or above

### Course Structure

#### AS

Students will extend and develop the contents of AS Mathematics (pure and applied). The course is divided into three modules: Pure Mathematics, Mechanics and Decision Mathematics.

#### A2

This part of the course will consist of mainly Pure Mathematics (two modules) with one further module of Statistics, Mechanics or Decision Mathematics.

### Method of Assessment

#### AS Level

Examinations in Pure Mathematics, Mechanics and Decision Mathematics.

#### A2 Level

Two modular examinations in Pure Mathematics and one Statistics or Mechanics module.

*For further information please contact: Mr E Dyke*

## Mathematics (Methods & Applied)

### Course Structure

Students will develop the GCSE topics of trigonometry, algebraic methods and statistics, alongside an introduction to calculus, dynamics and numerical methods. Whenever possible, study will be directed at the application of mathematical modules to real situations. The mathematics studied is excellent back-up for A Level and degree study in science subjects, engineering, design and social sciences.

### Method of Assessment

#### AS Level

Two modular Pure Mathematics examinations of one and a half hours duration and one Mechanics or Statistics modular exam of one and a half hours.

#### A2 Level

Two additional Pure Mathematics modules of one and a half hours and one Statistics or Mechanics modular examination of one and a half hours.

*For further information please contact: Mr E Dyke*



## Mathematics (Pure & Statistics)

### Course Structure

Students will develop the GCSE topics of trigonometry, algebraic methods and statistics, as well as being introduced to calculus, probability distributions and hypothesis testing. Whenever possible students will concentrate on the application of mathematical models to real situations.

### Method of Assessment

#### AS Level

Two Pure Mathematics modular examinations of one and a half hours each and one Statistics modular examination of one and a half hours.

#### A2 Level

Two additional Pure Mathematics modular examinations of one and a half hours each and an additional Statistics modular examination of one and a half hours.

*For further information please contact: Mr E Dyke*

## Media Studies

### Course Structure

This course focuses on teaching students the skills to analyse, evaluate and deconstruct media texts across a range of media platforms, including film, broadcasting, e-media and print. There are no prescribed texts and emphasis is very much on contemporary media products.

#### AS

At AS students investigate the media. Topic areas include media texts, concepts and contexts, investigation of the media platforms and cross media studies from broadcasting fiction, film, documentary, lifestyle, music, news and sport.

#### A2

At A2 students are encouraged to examine the media and its influential role in today's society, as well as debating contemporary media issues. Students engage in independent research into media text or theme in order to produce their own critical investigation and a linked production piece.

### Method of Assessment

At AS and A2 there is a written examination and a practical project with equal weighting.

*For further information please contact: Mr S Dale*

## Music

### Additional qualifications required

Students must be able to play at least one instrument (preferably two) at grade 5 or higher and will be expected to become fully involved in the wide range of extra-curricular music activities within the department.

### Course Structure

#### AS Units

- Influences on music: This will involve questions testing students' listening skills, study of a set work and a selection of musicals across a period of time
- Composing: This unit develops students' awareness of stylistic composition, writing four part harmony and a two part question exploring texture.
- Performing: students are asked to play solo and ensemble pieces.

#### A2 Units

- Music in context: This will involve questions testing and developing students' listening skills further and the study of one set work. It will also include the study of the development of Jazz across a period of time.
- Developing musical ideas: Developing students' harmony writing further and writing parts for a string quartet or a free choice composition.
- A musical performance: Students play a 12-15 minute solo programme.

### Method of Assessment

A mixture of formal examinations and coursework.

*For further information please contact: Mrs K Bromhead*

## Music Technology

### Additional qualifications required

Elementary musicianship is expected. Having an understanding of staff notation, chords and basic keyboards skills will be useful to any student undertaking the course. The main prerequisite is an interest in learning about the theory and practice of using music and technology together.

### Course Structure

The Music Technology course aims to equip students with the practical skills necessary to realise their own musical ideas, and those of others, using both computer-based software and conventional recording studio equipment.

### AS

- Music Technology portfolio comprises of three tasks involving:
- Sequenced realised performance
- Multi-track recording
- Creative sequenced arrangement
- Listening and analysing

### A2

- Music Technology portfolio comprises of three tasks involving:
- Sequenced integrated performance
- Multi-track recording
- Composing using technology
- Analysing and producing

### Method of Assessment

A mixture of formal examinations and coursework.

*For further information please contact: Mrs F Waddington or Mr R Durbin*

## OCR National ICT Level 3

*(The OCR National Level 3 can only be taken as a two year course and is equivalent to one A Level)*

### Additional qualifications required

Candidates must have passed the OCR National Level 2 Certificate in ICT (4 GCSE equivalent) or have a GCSE ICT grade B or above

### Course Structure

This is a vocational course that is suitable for students who wish to acquire further practical skills in the use and application of ICT.

Compulsory units are:

- Digital business communication
- Collaborative working
- Problem solving
- Creating a digital showcase

The choice of 2 optional units from the following:

- Web authoring, digital image photography
- Digital video, cartooning and animation
- Advanced spreadsheets, Desktop publishing

### Method of Assessment

Each unit is assessed by the candidate producing a portfolio of evidence that is then marked and externally moderated and graded at Pass, Merit or Distinction.

*For further information please contact: Mr J Clemitson*

## Philosophy and Ethics

### Course Structure

Philosophy: an introduction to the main themes and influences in Philosophy from Ancient Greece to modern day including Plato, Aristotle and Descartes. Students focus on thinking as a philosopher: the ability to critique, enquire and to use reason.

Ethics: an introduction to ethical debate and ideas. Students will study some of the most influential ethical concepts and theories. This section of the course will ask students to apply theories to ethical issues in the world today, for example medical ethics.

### Method of Assessment

Students will sit two examinations at the end of the first year and two at the end of the second year of study.

*For further information please contact: Mrs V Farr*





## Physical Education

### Course Structure

#### AS

- Physiological and psychological factors which improve performance;
- Socio-cultural and historical effects on participation in physical activity and their influence on performance;
- Written project. Practical performance in two chosen areas which will be assessed.

#### A2

- Physiological, historical and psychological factors which optimise performance.

### Method of Assessment

#### AS Level

- Theory: one two and a half hour examination paper with three questions. One from anatomy and physiology, one from acquiring and movement and one from the socio-cultural section.
- Practical: students assessed in two activities in either performing, refereeing/leading or coaching.

#### A2 Level

- Theory: the examination follows the same format as AS with a two and a half hour paper with one question from each of three theory areas. The last part of each question is a synoptic question.
- Practical: students are assessed in one activity in either performing, refereeing/leading or coaching.

*For further information please contact: Mr M Fenton*

## Physics

### Additional qualifications required

GCSE Grade B in Physics or GCSE Grade B in Core Science and Additional Science. GCSE grade B in Maths.

Students will learn through a variety of activities including discussion of new ideas and applications of physics in our lives, problem solving exercises and practical work. Students have the opportunity to work alongside others but are also encouraged to think independently.

### Course Structure

#### AS Units

- Particles, quantum phenomena and electricity
- Mechanics, materials and waves
- Investigative and practical skills

#### A2 Units

- Fields and further mechanics
- Nuclear physics, thermal physics
- Investigative and practical skills
- An option subject

### Method of Assessment

Assessment will be through modular examinations and assessment of students' investigative and practical skills throughout each year.

*For further information please contact: Mrs K Pearce*



## Psychology

### Additional qualifications required

GCSE grade B in Maths is desirable.

### Course Structure

Students will learn five major approaches to Psychology in the AS course. In each one students will discover a key topic of research, learn about important studies related to that topic, and find out how research is conducted in that area of Psychology. Students will learn to use statistical tests to help interpret data collected in class exercises.

### AS Units

- Social Psychology investigates how our behaviour changes because of the way we relate to people around us. Cognitive psychology studies memory, how it is created and organised and why people forget.
- Within the psychodynamic approach students will study Freud's view of how early experiences create our personality and gender identity. In the biological approach students will learn how nature affects our behaviour and in the learning approach students will investigate how gender differences can be learned.

### A2 Units

- This course gives students an opportunity to study some uses of Psychology in the real world and discover how the approaches learned come together to explain many aspects of human behaviour.

### Method of Assessment

The course is assessed through two examinations at AS Level and two at A2 Level.

*For further information please contact: Mrs A Standen*

## Sociology

### Course Structure

An "Introduction to Sociology" takes place in the first 4 weeks of the course explaining what sociology is and how sociological theory is used to explain social behaviour. During the course students will be encouraged to investigate current issues in the news and apply sociological ideas to understand their significance.

### AS Units

- Wealth, Poverty and Welfare
- Education with Research Methods

### A2 Units

- Global Development
- Crime and Deviance with Theory and Methods

### Method of Assessment

The course is assessed by written examinations in January and June of each year (one hour for Wealth, Poverty and Welfare and the other units are two hour examinations).

*For further information please contact: Mrs A Standen*

## Theatre Studies

### Course Structure

The course covers a broad range of theatre styles. Students will learn theoretical, analytical and practical approaches to studying plays and study the work of theatre practitioners. Students will also have to review a live production. Students need to be imaginative, enthusiastic and confident and be prepared to devote a good deal of their own time to research and rehearsal as the course culminates in a performance examination.

### AS Units

- Exploration of two contrasting plays texts
- Videoed practical workshop
- Written exploration notes
- Written response to a piece of live theatre
- Performance of a monologue or duologue
- Group performance of a published play

### A2 Units

- Group performance of a devised drama
- Written evaluation of the process and performance study of a set play text
- Study of a prescribed historical period of theatrical development
- Experience of a live theatre performance from the chosen historical period

### Method of Assessment

#### AS Level

Practical and written coursework plus a practical performance for external examiners

#### A2 Level

Practical coursework assessed in school time by teachers and a written examination in June.

*For further information please contact: Mrs A McLurg*



**ROSSETT SIXTH FORM**

Green Lane

Harrogate

HG2 9JP

Telephone: 01423 564 444

E-mail: [office@rossettschool.co.uk](mailto:office@rossettschool.co.uk)

Website: [www.rossettschool.co.uk](http://www.rossettschool.co.uk)